

Gabriel Iqbal
Leading Peak Performance Coach

Eureka[®]

Leadership-Management-Team Building-Well Being-Environment

Making a Difference[™]



Environmental and Social Responsibility

CONTENTS

- **Part 1:** **Environmental Ethics**
- **Part 2:** **Sustainable Development**
Long Term Cost/Benefit Analysis
- **Part 3:** **State of the Planet**
- **Part 4:** **Singapore Airlines**
Making a Positive Impact on the World
- **Part 5:** **Exercise**
Stewardship Ethic
“Think Globally Act Locally”

Gabriel Iqbal
Leading Peak Performance Coach

Eureka[®]

Leadership-Management-Team Building-Well Being-Environment

Making a Difference[™]



Subject: Environmental and Social Responsibility

Part 1: Environmental Ethics

Environmental Ethics

Environmental ethics is the part of environmental philosophy which considers the ethical relationship between human beings and the natural environment. It exerts influence on a large range of disciplines including law, sociology, theology, economics, ecology and geography. There are many ethical decisions that human beings make with respect to the environment.

For example:

- ✓ Should we continue to clear cut forests for the sake of human consumption?
- ✓ Should we continue to make gasoline powered vehicles, depleting fossil fuel resources while the technology exists to create zero-emission vehicles?
- ✓ What environmental obligations do we need to keep for future generations?
- ✓ Is it right for humans to knowingly cause the extinction of a species for the (perceived or real) convenience of humanity?

Gabriel Iqbal
Leading Peak Performance Coach

Eureka[®]

Leadership-Management-Team Building-Well Being-Environment

Making a Difference[™]



Subject: Environmental and Social Responsibility

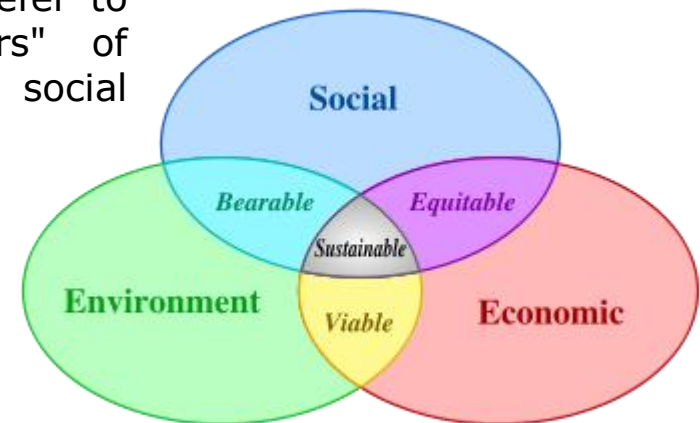
Part 2: Sustainable Development
Long Term Cost/Benefit Analysis

Sustainable Development

as balancing the fulfilment of human needs with the protection of the natural environment so that these needs can be met not only in the present, but in the indefinite future. The term was used by the Brundtland Commission which coined what has become the most often-quoted definition of sustainable development as development that "meets the needs of the present without compromising the ability of future generations to meet their own needs."

The field of sustainable development can be conceptually broken into four constituent parts: environmental sustainability, economic sustainability, social sustainability and political sustainability.

Sustainable development does not focus solely on environmental issues. More broadly, sustainable development policies encompass three general policy areas: economic, environmental and social. In support of this, several United Nations texts, most recently the 2005 World Summit Outcome Document, refer to the "interdependent and mutually reinforcing pillars" of sustainable development as economic development, social development, and environmental protection.



Theoretically, the long term result of environmental degradation would be local environments that are no longer able to sustain human populations to any degree. Such degradation on a global scale could imply extinction for humanity.

Consumption of renewable resources	State of environment	Sustainability
More than nature's ability to replenish	Environmental degradation	Not sustainable
Equal to nature's ability to replenish	Environmental equilibrium	Steady-state Sustainability
Less than nature's ability to replenish	Environmental renewal	Sustainable development

Long Term Cost/Benefit Analysis

Cost-Benefit Analysis of Investments in Airport Infrastructure: A Practical Approach.

José-Doramas Jorge, European Investment Bank, Luxembourg

Ginés de Rus, University of Las Palmas de G.C. (Spain) and Institute of Transportation Studies (UC Berkeley)

Abstract

This paper presents a cost-benefit analysis approach devised to conduct project evaluation in conditions of limited analyst time, research budget and data availability. The emphasis is on discarding economically viable from unviable projects rather than on arriving at a precise return figure. The paper starts by setting out the theoretical background regarding the identification and measurement of project benefits. It then presents a practical approach to measure such benefits in projects involving the expansion of passenger capacity and, subsequently, those aimed at expanding aircraft capacity. Projects for the freight market and the estimation of airport costs are both treated separately.

[Click here to read the above paper.](#)

Books:

Towards Sustainable Aviation

By Paul Upham, Janet Maughan, David Raper, Callum Thomas

Gabriel Iqbal
Leading Peak Performance Coach

Eureka[®]

Leadership-Management-Team Building-Well Being-Environment

Making a Difference[™]



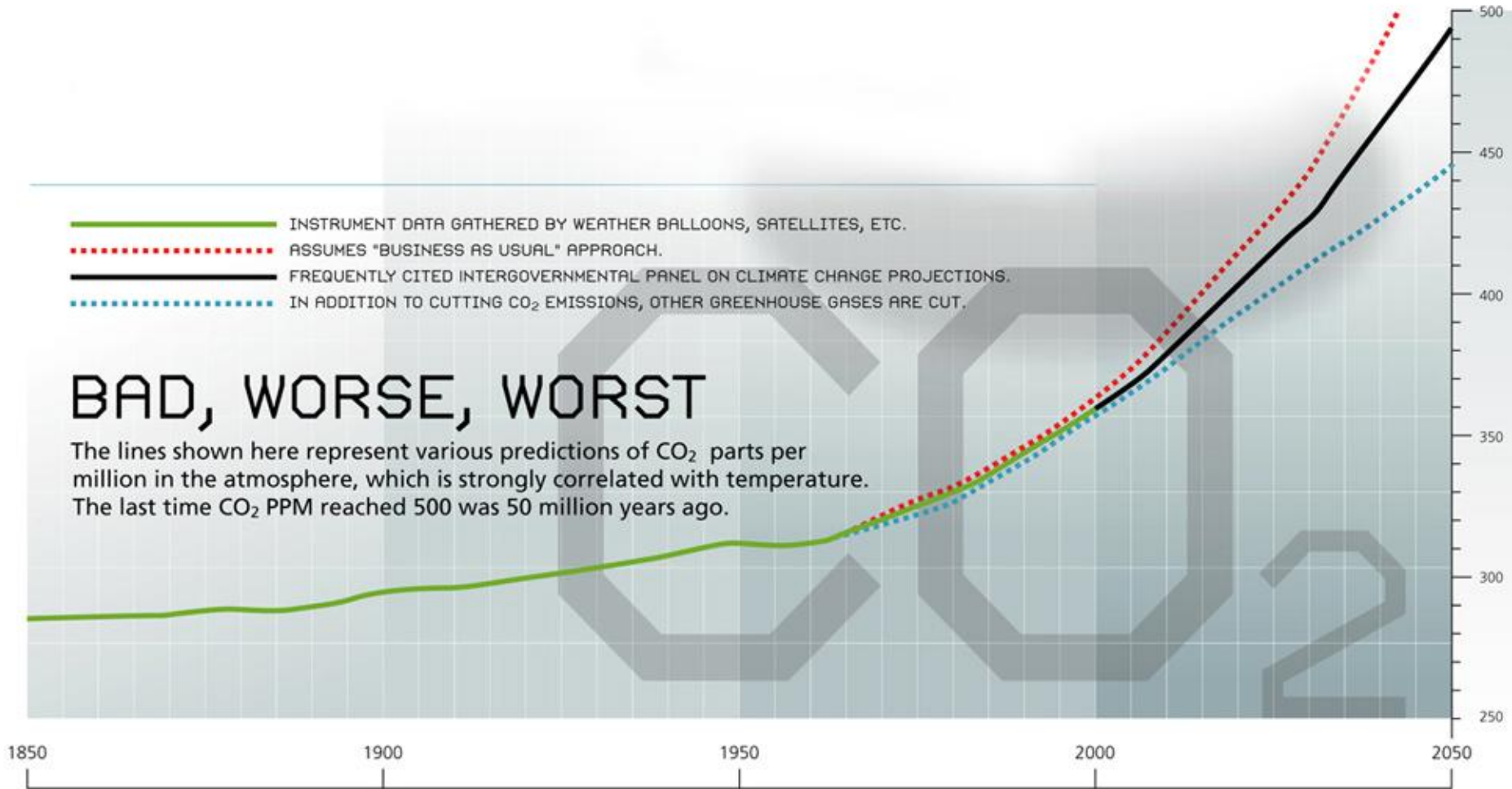
Subject: Environmental and Social Responsibility

Part 3: State of the Planet

- INSTRUMENT DATA GATHERED BY WEATHER BALLOONS, SATELLITES, ETC.
- ⋯ ASSUMES "BUSINESS AS USUAL" APPROACH.
- FREQUENTLY CITED INTERGOVERNMENTAL PANEL ON CLIMATE CHANGE PROJECTIONS.
- ⋯ IN ADDITION TO CUTTING CO₂ EMISSIONS, OTHER GREENHOUSE GASES ARE CUT.

BAD, WORSE, WORST

The lines shown here represent various predictions of CO₂ parts per million in the atmosphere, which is strongly correlated with temperature. The last time CO₂ PPM reached 500 was 50 million years ago.



SOURCE: Intergovernmental Panel for Climate Change

HEAT THE POOR

Carbon dioxide emissions come largely from areas of the globe that will see less of a resulting rise in temperature; the regions that will see greater temperature change are those that can least afford to deal with it.

-  EXPECTED RISE IN TEMPERATURE BY THE END OF 21ST CENTURY: 1-5° C
-  EXPECTED RISE IN TEMPERATURE BY THE END OF 21ST CENTURY: 5-10° C
-  CO₂ EMISSIONS
-  REGIONS OF WIDESPREAD POVERTY

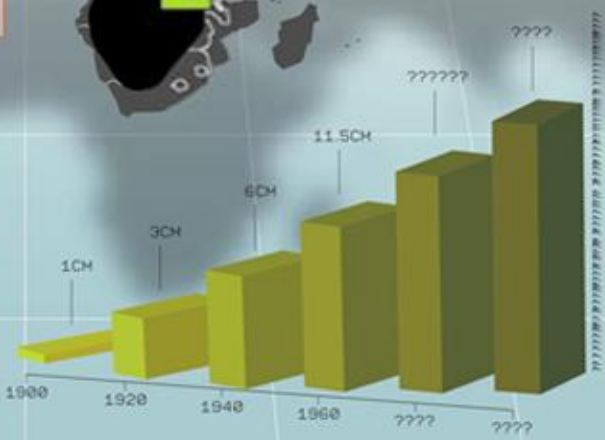
CO₂ EMISSIONS

(MILLION METRIC TONS)



RISING TIDES

As Arctic ice melts, sea levels are rising, threatening coastal areas and major cities worldwide.



SOURCE: CO₂ UNFCCC World Climate Change Graphics, February 2005 SOURCE: HEAT: Hadley Centre for Climate Prediction and Research SOURCE: POVERTY: World Bank

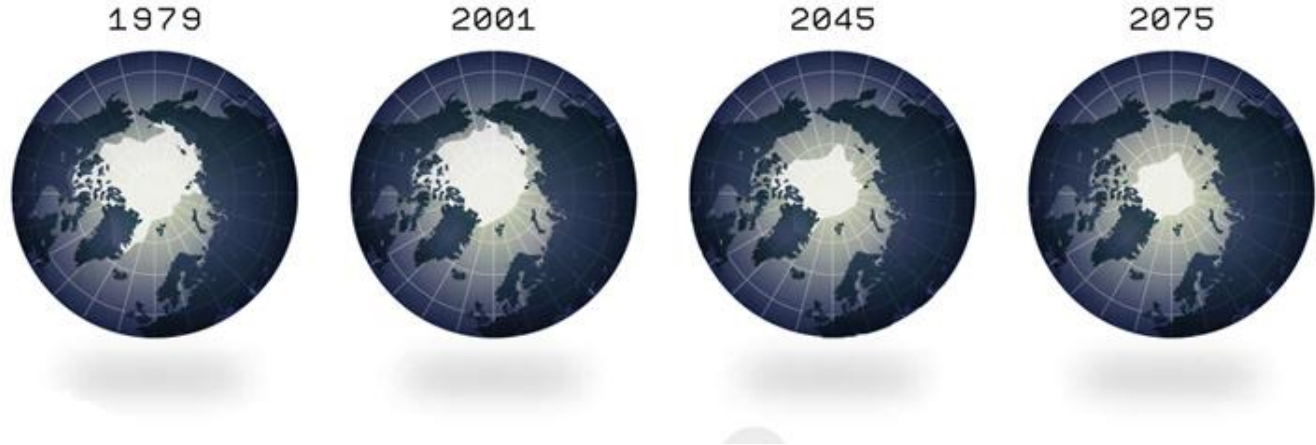
SOURCE: "Extinction Risk from Climate Change" Nature, January 8th, 2009

35%

OF CURRENT
SPECIES
COULD GO
EXTINCT BY
2050 AS A
RESULT OF
CLIMATE
CHANGE.

RETREAT FROM THE SUN

The amount of ice cover in the Arctic has been shrinking by nearly 8% per decade since 1980, the rate of shrinkage is increasing and the remaining ice is getting thinner. The effect will have drastic impacts on climate and weather systems worldwide.



SOURCE: NASA

Gabriel Iqbal
Leading Peak Performance Coach

Eureka[®]

Leadership-Management-Team Building-Well Being-Environment

Making a Difference[™]

The logo graphic features a blue semi-circle containing a white airplane in flight, a stack of four stones, and a stylized human figure.

Subject: Environmental and Social Responsibility

Part 4: Singapore Airlines
Making a Positive Impact on the World

Singapore Airlines Making a Positive Impact on the World



Singapore Airlines recognizes the importance of building strong relationships, not only with its customers and business partners, but also with the many communities it serves. We practice good corporate citizenship actively through the support of the arts, sports and educational initiatives, both locally and abroad. We are also committed to helping the less privileged, sponsoring programmes for the needy, involving handicapped children as well as senior citizens, and protecting the environment.

Courtesy of singaporeair.com

Singapore Airlines

Making a Positive Impact on the World



The Arts

From orchestras and theatre groups, to travel grants and education, Singapore Airlines believes that supporting the Arts is an essential part of good citizenship.

Education

We believe people are a country's great asset and their potential must be developed to the fullest, hence our hearty support, in cash and kind, for schools, institutions of higher learning. Singapore Airlines also contributes to community programmes which support the education of bright but financially challenged students.

National Events

Singapore Airlines is committed to supporting significant national events such as the annual National Day Parade.

Sports

Team spirit and healthy lifestyles are important for all citizens of Singapore, young and old, so we fund sports in our community.

Welfare

Singapore Airlines does its part to provide opportunities for the less fortunate to better their situations through contributions to various welfare schemes and charity organizations.

The Environment

As the world's leading Airline, Singapore Airlines has an obligation to contribute to the protection and preservation of the environment. Learn about our environmentally sensitive policies and procedures in [The Singapore Airlines Environmental Report 2006-07](#).

Courtesy of singaporeair.com

Gabriel Iqbal
Leading Peak Performance Coach

Eureka[®]

Leadership-Management-Team Building-Well Being-Environment

Making a Difference[™]



Subject: Environmental and Social Responsibility

Part 5: Exercise

Stewardship Ethic

“Think Globally Act Locally”

Exercise:

- ✓ Create a Sustainable Development model for your company and emphasise on Best Practices for Social and Environmental responsibility.
- ✓ What do you understand by the term “Stewardship Ethic” and “Think Globally Act Locally”
- ✓ Activity Time 20
- ✓ Presentation Time 20